

# Maiden Bradley

Parish News

No 350 August 2018



**Cycling Down the Moselle River Valley**



Downhill cycle path  
from the source



Metz

## Ray and Carol Kenzie cycle the Moselle River Valley - story inside



Near the border of  
France / Germany  
/ Luxembourg



A typical hilltop castle



Flooded river  
and cycle path



Journeys end -  
Rhine on the right,  
Moselle on the left

## Diary August 2018

1 <sup>st</sup>	Wed	Prayer Meeting – Details 844817	6.30 pm
5 <sup>th</sup>	Sun	Catch Up Sunday with Coffee & Croissants – Memorial Hall	10.00 am
6 <sup>th</sup>	Mon	Household Waste Collection	7.00 am
8 <sup>th</sup>	Wed	Prayer Meeting	6.30 pm
11 <sup>th</sup>	Sat	Mangled Wursels at Somerset Arms	9.00pm
12 <sup>th</sup>	Sun	Patronal Festival at St Mary's, West Knoyle No service at All Saints'	10.30 am
13 <sup>th</sup>	Mon	Black Box, Blue & Green Bins Collection	7.00 am
15 <sup>th</sup>	Wed	Prayer Meeting	6.30 pm
18 <sup>th</sup>	Sat	Maiden Bradley Village Show – Memorial Hall	2.00 pm
19 <sup>th</sup>	Sun	Village Show service – Memorial Hall	10.00 am
20 <sup>th</sup>	Mon	Household Waste Collection	7.00 am
22 <sup>nd</sup>	Wed	Prayer Meeting	6.30 pm
20 <sup>th</sup>	Copy Deadline for September Parish News to <a href="mailto:pat@visa-office.com">pat@visa-office.com</a>		
25 <sup>th</sup>	Sat	Arts & Crafts Weekend – Memorial Hall	11.00 am-5.00 pm
26 <sup>th</sup>	Sun	Parish Communion by Extension – Church	10.00 pm
		Arts & Crafts Weekend – Memorial Hall	11.00 am-5.00 pm
27 <sup>th</sup>	Mon	Black Box, Green & Blue Bins Collection	7.00 am
		Arts & Crafts Weekend – Memorial Hall	11.00 am-5.00 pm
29 <sup>th</sup>	Wed	Prayer Meeting	6.30 pm

Mass times:- St. George's, Warminster – Saturday 6 pm (Vigil);  
Sunday 8 am 10 am  
St. Mary's, Mere – Friday 10 am; Saturday 5.30 pm

Dr Harding's Surgery every Monday at the Memorial Hall  
except Bank Holidays 5-6 pm. Please bring your orders to Memorial Hall  
Surgery the week before they are due for the Doctor to process..

Refuse & Recycling Collections every Monday, for Bank Holiday changes  
see Wiltshire Council website.

Mother & Toddlers every Tuesday 10.00 am to 12 noon.

Useful telephone Nos.: The Pub: 844207; Memorial Hall bookings – Mel  
Thomas 845111 ; Dr. Andrew Murrison MP: 01225 358584 or  
[murrisona@parliament.uk](mailto:murrisona@parliament.uk); Mere Link Scheme 01747 860096; Rev. Carol  
Wilson-Barker 01747 861859.

Bell Ringing every Tuesday 7 pm in the Bell Tower at the Church. Beginners  
welcome 844475

Coffee Mornings every Friday in the Hall 10 am till 12 noon

Maiden Bradley Parish News – contributions are welcome and preferred in  
WORD format. Email [pat@visa-office.com](mailto:pat@visa-office.com)

**Magazine available online at**  
**[www.maidenbradleyvillage.org.uk](http://www.maidenbradleyvillage.org.uk)**

## Editorial

The summer holidays are here and for me, it's looking after the grandchildren and taking them to interesting and historical places interspersed with hours of fun in the garden splashing in the paddling pool. Picnics are their favourites even if it is only in the tent in the house or by the lakes at either Stourhead or Longleat. We can take our holiday time out of season and this is of course, a much cheaper time to travel.

We spent a very enjoyable few hours on a recent visit to Hauser and Wirth at Bourton where an exhibition by the late Alexander Calder, was displayed. A contemporary of Picasso, his work reflects the era in paintings, mobiles, inside and outside metal sculptures and many useful household items. I can recommend it especially as it is so local and free entry. (donation appreciated)

The lack of good rainfall must be devastating for farmers having to use winter fodder during summer months to feed livestock, grass everywhere is brown and crisp but somehow, the weeds survive through it all. The garden birds are in constant need of feeding and we put out shallow bowls of water for them to drink and bathe in.

Whatever you are doing this summer, have a lovely time.

Pat Kennedy 845397 [pat@visa-office.com](mailto:pat@visa-office.com)

### Family News

Sad to say that Frances Pilbrow passed away on 19<sup>th</sup> June. She was 94 and had lived in Maiden Bradley since 1973.



### Spotted in Longbridge Deverill.....

Len and Sylvia Cooper show their Leather's coach at the Vintage Vehicle Fair at The George

## Message from the Vicarage

We have recently experienced an unsettling time in our national life what with the Chequers meeting about Brexit, the resignations and President Trumps visit to Europe. The sad death of Dawn Sturgess a local lady caught up in the Novichok poisonings has brought international skulduggery right to our doorstep. Many people have been affected first Salisbury and now Amesbury with businesses being offered a further £2.8 million government support package by the Prime Minister.

News coverage is bang up to date and often right in your face. Seeing events unfold live and be repeated time and again over the course of a day can tend to heighten a sense of anxiety. When our lives too are burdened with care or concern about money, a loved ones state of health or many myriad things we can get cumulatively overwhelmed.

It is important to stop and allow ourselves a moments space and time in the beauty of the present. I liked this passage by Geoffrey Harding: "the release of anxiety is to turn cares into prayers...for anxiety does no good to us. If anxiety is turned into a prayer, it widens and enriches our spiritual life it turns a thought which is depressing into a thought which is uplifting."

With love and prayers - Rev Carol

## Welcome Club

August already! Hope you are all enjoying the warm weather- sometimes too warm!! We had a terrific day out in June when an almost full coach took off for the delights of Dartmouth. We had a very comfortable ride on our journey reaping the benefit of an excellent air conditioning system on board. We stopped at Ottery Garden Centre for coffee and arrived at Dartmouth around 1.15pm ready for lunch, boat rides and exploring the town leaving at 4.30pm. We stopped at Podimore Service area for a comfort stop and the raffle and arrived home at 7.30pm, tired but happy having had a wonderful day out.

For our June Hall Meeting we played Prize Bingo run so ably by Tom. Details of July happenings will appear in next month's issue! There was a trip to Corfe and Swanage and a visit from the Aster Group at Horningsham Hall where a team of four people spoke of their work and demonstrated some useful items.

No happenings during August – back to normal in September. Happy Holidays!

Chris Short.

## News from the Hall August 2018

Don't forget to get your entries in for the Village Produce Show, which will be on Saturday 18<sup>th</sup> August. Along with the produce there will be Tombola and Cream Teas on offer. Mary Stevens is looking for prizes for the Tombola.

The organisers of the Nearly New Sale would like to say a big thank you to all those who donated items and those who supported the sale.

This year's Art Festival will take place over the Bank Holiday weekend Sat/Sun/Monday 26/27 & 28<sup>th</sup> August. Please contact Steve Gunter if you would like to exhibit your talents. Refreshments including Cream Teas will be available throughout. The Exhibition will be open 10.00 am - 4.00 pm.

The hall's AGM will take place on Monday 10<sup>th</sup> September at 7.00pm. All members of the public are welcome to attend.

**We hope to have a Major announcement to make at this meeting**

Anyone wishing to join the committee and any current members who wish to stand down should contact Mel Thomas or Sheila Foley by the 1<sup>st</sup> September. The hall needs your support if it is to survive, it's your hall make it work.

The Night of Music raised several £100's for the Salisbury Hospice. A big thank you goes to those few villagers who attended.

The Pit Stop Café is open again on Sunday mornings so come and try our bacon/sausage baps along with all the gossip and socialising that goes on.



Mel Thomas

## Vacancy on the Parish Council!

### Being a Councillor

Maiden Bradley Parish Council needs a new team member; if you think you would like to take the wishes of the Parish Plan forward are over 18 years of age contact the Clerk on 01985213436 or email [maidenbradley@virginmedia.com](mailto:maidenbradley@virginmedia.com)

### What is a councillor?

Councillors are elected to represent an individual geographical unit on the council, known as a ward or - parish – in Maiden Bradley it is the entire parish. They are generally elected by the public every four years, but there is a Co-option space available on the Parish Council at the moment as Councillor Melvyn Thomas has given his resignation to the Parish Council.

### What do councillors do?

#### Councillors have three main components to their work.

1. Decision making - Through meetings and attending committees with other elected members, councillors decide which activities to support, where money should be spent, what services should be delivered and what policies should be implemented.

2. Monitoring - Councillors make sure that their decisions lead to efficient and effective services by keeping an eye on how well things are working.

3. Getting involved locally - As local representatives, councillors have responsibilities towards their constituents and local organisations. These responsibilities and duties often depend on what the councillor wants to achieve and how much time is available, and may include:

- Going to meetings of local organisations such as the Rural Police Neighbourhood Tasking Group
- Going to meetings of bodies affecting the wider community (The Warminster Area Board)
- Taking up issues on behalf of members of the public

### How much time does it take up?

Quite often councillors say that their duties occupy them for about an hour a week. Obviously there are some councillors who spend more time than this - and some less, but in the main, being a parish councillor is an enjoyable way of contributing to your community, and helping to make it a better place to live and work.

As a councillor representing your community you will help keep it a great place to live and work. You will be supported in your role and will be expected to undertake training. You should be comfortable working electronically. You should have a positive outlook and a can-do attitude and be willing to work as part of a team. If after reading this notice you are interested in applying please contact the clerk to the council using the above details.

**The closing date for applications is Friday 7th September 2018.**

I would like to make you aware that our council has achieved the Gold Quality (level) award level as part of the Local Council Award Scheme. The award recognises that we, as a council, meet the high standards set by the parish council sector, as assessed by our peers. In particular this means Maiden Bradley Parish Council ). It's very rewarding to be recognised for all that we do for our community, and I'd like to take this opportunity to thank you for all your hard work and dedication. The Parish council is one of only 36 in England and Wales to hold this category only 3 are Small Parish councils the rest are town councils.

The Local Council Award Scheme not only seeks to reward parish councils, but also works to provide councils with the tools to improve further. We are now exploring ways in which we can improve even further and (progress to the next level of award/maintain our position in this award level delete as appropriate We now want to use this award to raise the reputation of our council in the local area.)

**Maiden Bradley**

Are you passionate about your local area?

- Do you want to make a difference in your local community?
- Would you like to offer your skills and experience?
- Do you enjoy being part of a team?

**BECOME A COUNCILLOR**

Join 80,000 councillors across the country, who are working to make their communities better for residents.

**FIND OUT MORE:**  
if you think you would like to take the wishes of the Parish Plan forward are over 18 years of age contact the Clerk on 01985213436 or email [maidenbradley@virginmedia.com](mailto:maidenbradley@virginmedia.com)

Local Councils give communities a voice and are democratically accountable to the community.  
Local Councils were established by legislation over 120 years ago and are increasing in scope, strength and numbers each year.



# Arts and Crafts Weekend

Maiden Bradley Memorial Hall

SAT AUGUST 25<sup>th</sup>-Mon 27<sup>th</sup> 11am to 5pm

A selection of local artisans

Including Artworks, Photographic Images,

Wood Turning, Soft Furnishings

And Upholstery

Refreshments available

Cream Teas served 2-4pm

daily

# **Maiden Bradley Village Show Saturday August 18th 2pm In the Memorial Hall**

## **BEST VILLAGE DOG**

Please don't forget to bring your 'pooch' along to the village show on August the 18th for the best village dog competition. We had very few entries last year and to be honest, the judge was a little disappointed.

We can do much better this year I am sure.  
Please bring him/ her along to the Hall at 2pm.  
Entry is only £1.



## **VILLAGE SHOW ENTRIES**

This is a reminder to all the children in and around the parish. Please look through the show schedule as we would love it if you could find a class or perhaps two or even more to enter. There is a children's shield for the child who earns the most points which you proudly keep for the year.

Sue Priestner 844244.

## **Village Show Tombola**

Prizes needed for the Village Show tombola stall  
- all donations will be greatly received.

Please contact Mary Stevens on 844392  
or bring to the village hall during shop opening hours  
(Mon, Weds, Fri 9-11.30)

## Cycling Down the Moselle River Valley

This year for our bike trip we cycled 400 miles down the Moselle river from its source in the Vosges Mountains near Bussang in France to its end where it joins the River Rhine at Koblenz in Germany. On the first day we rode downhill to Remiremont on a beautiful, smooth cycle path and only needed to pedal for about 10 of the 23 miles! From there we followed the partly canalised river through charming French villages and small towns down to and around the city of Nancy, and on to Metz and Thionville, staying in some charming French B&B's and hotels, including an old Abbey.

This year we adopted a routine of leaving the car and then cycling for 3 days, when I would go back on the train to collect the car on our "rest" day (while part of the team checked out the hotel pool). Despite the French Rail Strike, this worked well as our rest days coincided with non-strike days, apart from one day when I was travelling by train from Trier in Germany, only to discover at the border that it was a French strike day and so had to cycle the remaining 25 miles to Thionville in pouring rain to collect the car— some rest day!

The second part of our trip in took us down through the vineyards and delightful half timbered towns of the Mosel region in Germany (which of course involved some tastings), past romantic hilltop castles and vine covered slopes. Generally we were very lucky with the weather and some thunderstorms only occurred at night but in the latter stages did result in some fairly high river levels and flooded cycle paths which fortunately we managed to avoid.

Finally after 389 miles and 19 days (15 days actual cycling) we arrived at the confluence of the Moselle with the Rhine in the lovely city of Koblenz, before heading back to France for a weeks rest with some friends.

As usual after our trips I am ashamed at the comparison between our cycling infrastructure and that of the Europeans, not only because of their superb, mostly traffic free cycle paths but also because of the facilities and ease of use for cyclists on trains.

Carol and Ray Kenzie

## The Somerset Arms



Here at The Somerset Arms we are enjoying the lovely Summer, with the garden being very busy. The boules court is available to use, we have a set behind the bar or bring your own. It is nearly Skittle season again and we hope to welcome back last year's teams, we are also able to accommodate new teams for Summer or Winter leagues. The skittle alley is also a great venue for a party or a business meeting.

Tuesday night is Steak night when you can get 2 steaks and a bottle of wine for £25.

Sunday we serve traditional roast dinner 12-3pm

Saturday 11<sup>th</sup> August 9pm we have The Mangled Wurzels playing, come early to make sure you have a seat.

Provisionally for your diaries in September, we will be holding another Tractor Run with Hog Roast and hopefully an Apple Pressing.

Lyn and Andy would like any suggestions for future events you would like to see taking place, please feel free to pop in to chat about it or put a note through the door.

Call us 01985 844207



**Downlands**  
TREE SURGERY

**01985 214320**  
**95 Frome Road**  
**Maiden Bradley, BA12 7JA**

**Expert Tree Care**  
**Skilled Pruning**  
**Felling**  
**Stump Removal**  
**Qualified & Insured**

*Free Tree Health Survey*  
*And Quotes*

f Follow 'Fostering in Wiltshire'

## Could you offer a stable and supportive home?

We need foster carers who can provide a loving, supportive home for children in care. We will provide you with suitable placements to match your circumstances. You will be part of a professional team and be provided with your own support worker, ongoing training and a 24 hour helpline. In addition, you will be paid a generous allowance.

### Interested?

Call us today on 0800 169 6321,  
email [fostering@wiltshire.gov.uk](mailto:fostering@wiltshire.gov.uk) or  
go to [www.wiltshire.gov.uk/fostering](http://www.wiltshire.gov.uk/fostering)

*Be the difference – become a foster carer with Wiltshire Council*

**Fostering**  
be the difference

**Wiltshire Council**  
Where everybody matters

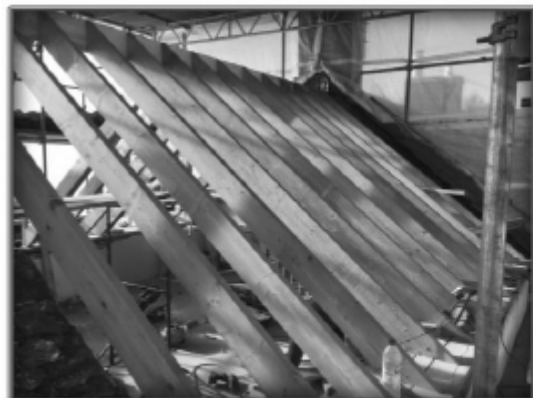
# computing@home

**Friendly local computer expert offers tuition,  
support , website creation and an  
IT Helpdesk service!**

**[www.computing-at-home.co.uk](http://www.computing-at-home.co.uk)  
01985 844637**

**CRABBE**  
**& SON**

H.Crabbe & Son



Extensions & Renovations  
Roofing  
Kitchen Fitting  
Carpentry & Joinery  
General Building and Repairs  
Painting & Decorating

Tel: 01373 832812  
Mobile: 07889140299  
[markcrabbe@hotmail.co.uk](mailto:markcrabbe@hotmail.co.uk)

**SEASONED FIREWOOD**

**FOR SALE**

**D R M FORESTRY**

[Drmforestry@hotmail.co.uk](mailto:Drmforestry@hotmail.co.uk)



07875 350226

01985 844878

**Hard wood logs sold loose**

Price includes local delivery around Maiden Bradley and  
the local area

Various sizes available From 8 inch



Tel: 01985 845304

59 The Rank  
Maiden Bradley  
Wiltshire  
BA12 7JF  
E: [info@greenlifeplumbing.co.uk](mailto:info@greenlifeplumbing.co.uk)  
[www.greenlifeplumbing.co.uk](http://www.greenlifeplumbing.co.uk)

- Oil and Gas Boiler Installs – Boiler Finance Available
- General Plumbing Works
- Full Central Heating Systems
- Underfloor Heating
- Renewable Installs – Air Source Heat Pumps, Biomass
- 1<sup>st</sup> and 2<sup>nd</sup> Fix Plumbing Works – New Build, Extensions
- Bathroom Refurbishment, New Bathroom Projects



508089



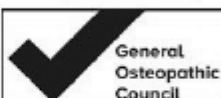
**BAXI**  
Approved Installer

[Checkatrade.com](http://Checkatrade.com)  
Where reputation matters



## Elizabeth Gittoes

Registered  
Osteopath



**I'M REGISTERED**

Registration no. 7331

[www.osteopathy.org.uk](http://www.osteopathy.org.uk)

Consultation by prior arrangement. Please call Elizabeth to make an appointment.

Email: [lizgittoes@yahoo.co.uk](mailto:lizgittoes@yahoo.co.uk)

Telephone: 01747 840496

The Old Police House  
Stourton, BA12 6QG.

## ALLSOP CARPETS & FLOORING

DOMESTIC • COMMERCIAL • INDUSTRIAL



Christchurch Street West, Frome. BA11 1EB

TEL: 01373 463866  
MOBILE: 07887 953014

[www.allsopcarpets.co.uk](http://www.allsopcarpets.co.uk)

## E G MARTIN LTD



for all your  
**Central Heating Oil**

01373 822784  
enquiries@egmartin.co.uk

*your local central heating  
fuel distributor*

## M H Plastering & Building Services

For a no obligation quote  
please call 01373 301009  
or 07783 226262 or email  
info@mhplasteringandbuilding.co.uk

SERVICES WE OFFER:  
Rendering • Plastering  
Floor Screeding • Dry Lining  
Stud Walls • Floor Tiling  
Wall Tiling • Brick & Block  
Work • Pointing  
And all Lime work  
for Restoration



## JERRY RAYNER:

boiler maintenance

Call 01985 841461  
or 07775 755981

For servicing and  
breakdown of oil boilers

- *Competitive rates*
- *Friendly, helpful & efficient*
- *Call now for a quote*

**Advertise  
here  
from £5 per  
month**

**Contact :  
Pat Kennedy 845397**

**pat.kennedy6093@gmail.com**



NFU MUTUAL IN  
WARMINSTER IS  
PROUD TO BE  
ASSOCIATED WITH  
MAIDEN BRADLEY  
PARISH NEWS

Taking the time to offer you attentive, personal, local service for your Insurance, pensions and investments

Call our friendly team for an  
insurance quotation on 01985  
845116 or pop in

NFU Mutual Office,  
Perry Farm,  
Maiden Bradley,  
Warminster, Wiltshire,  
BA12 7JD



**NFU Mutual**

It's about time

Agent of the National Farmers Union Mutual Insurance Society Limited.

## Painting & Decorating



By Tony Layard

Tel. 07941 759 297



MODERN FACILITIES | TRADITIONAL VALUES  
Dedicated equine, small animal & exotics team



Based in Trudoxhill, near Frome covering Somerset, Wiltshire & Dorset  
[www.bellevue-vets.co.uk](http://www.bellevue-vets.co.uk) | 01373 836186 | [info@bellevue-vets.co.uk](mailto:info@bellevue-vets.co.uk)



*"Moving at the highest standard"*

You can be sure of Armishaws:

- **UK - Local and long distance**
- Full and **part-loads**
- Full **European** service
- Full **packing** service
- **Containerised storage**
- Friendly, **personal** service
- **Local business, family owned** and run since 1973



For a survey and **FREE** same day quote please call us on:

**01985 215991**

Visit our website at: [www.armishaws.com](http://www.armishaws.com)  
or email us at [enquiries@armishaws.com](mailto:enquiries@armishaws.com)



Rural Business Services was established in 1997 to provide professional book-keeping and administration services for small to medium sized rural based businesses. In addition we offer first class Project Management, sound sensible Business Administration & Financial Solutions together with Board Level Financial Management Experience. No matter how small or big your requirement is we can tailor support to suit your business needs either on or off site.

For more information or to discuss your requirements contact  
**Lucinda Stokes on 01985 844017**  
[www.ruralaffairs.co.uk](http://www.ruralaffairs.co.uk) • email: [lucinda@ruralaffairs.co.uk](mailto:lucinda@ruralaffairs.co.uk)

## **Walking On Air Footcare**

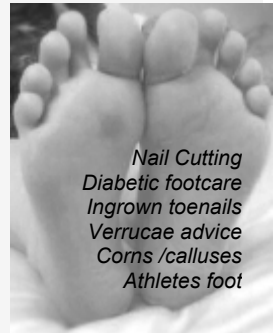
Visiting Foot Health Professional  
MCFHP MAFHP

*Providing treatment and advice  
to keep you mobile*

**Friday Clinic held at Maiden Bradley  
Memorial Hall**

For an appointment phone Jean:

**0793 4495518**



*Nail Cutting  
Diabetic footcare  
Ingrown toenails  
Verrucae advice  
Corns /calluses  
Athletes foot*

## Hobbies Weekend

What a diverse range of hobbies and interests were on display at the Memorial Hall! From whip making to wood turning - singing to scrabble , gardening, flower arranging , model trains, planes and boats to full size tractors!



There's always something to do in Maiden Bradley!



**Maiden Bradley Pantomime Group**

Many people of all ages have had great fun over the past 30 years in bringing a Pantomime to our Memorial Hall.

We are looking to do a new production every year and would welcome any input whatsoever from any member of our village community.

If you are interested in some of our roles, who would like to join as phone contact Carol Kemble - 44434 or Facebook Maiden who would be delighted to chat up to date. We look forward to meeting you.

The collage consists of numerous small photographs showing different scenes from a pantomime performance, including characters in elaborate costumes on a stage.