

Maiden Bradley Parish News

388 October 2021



The Big Green Walk

October Diary

3	Sun	Catch-up Sunday with coffee and croissants 10-11am
4	Mon	Green recycling collection
6	Wed	Blue bin and black box recycling collections
9	Sat	Jon Kenzie live in the hall – SOLD OUT Church Decoration for Harvest Festival 10am
10	Sun	Harvest Festival with Jane Hurd 10.30am
11	Mon	Household waste collection
17	Sun	Morning Service 10am Climate collective coffee morning in the hall 10.30 – 12am
18	Mon	Green recycling collection
20	Wed	COPY DATE all copy to pat@visa-office.com
23	Sat	Film night in the hall – Peter Rabbit 2 - film starts at 6.30pm
24	Sun	Parish Communion – Rev. Dr. Stella Wood 10am
25	Mon	Household waste collection
31	Sun	Benefice Service for All Saints Day, Canon Harold Stevens 10am

Useful Telephone Numbers

Speed Watch Co-ordinator	Simon Wager	simon.m.wager@gmail.com
Nadder Oil Buying Club	Email: richard.willan@me.com	www.oilbuyingclub.com
Neighbourhood Watch Co-ordinator	Derek Stevens	01985 844428
Community Garden	Kate Moore	katemoore@silkmillstudios.co.uk
Book Club	Jessica Johnson	01985 844174
Pilates		01985 511693
Cookery Demonstrations	Rosie Brown	01985 844236
Luncheon Club		01985 844779
Welcome Club Outings		01985 844779
Scrabble Club		01985 844919
Memorial Hall bookings		01985 845303
Dr Andrew Murrison MP		01225 358584
Mere Link Scheme	murrisona@parliament.uk	01747 860096



The post office is open in the Village Hall on Tuesdays 1-3pm
Bell Ringing Tuesday 7 pm in the Bell Tower at the Church, beginners welcome 844475
Coffee Mornings every Friday in the Hall 10 am till 12 noon
Maiden Bradley Parish News – contributions are preferred in editable text format.
Email pat@visa-office.com

Magazine available online on the village website:

www.maidenbradleyvillage.org.uk

Editorial

One of the joys of living in Maiden Bradley is the wonderful variety of people who live here. Talents abound and new residents bring a wealth of different life experiences that add to our little community.

What is it that causes an individual to raid a milk station? Surely everyone knows there is very little cash available to steal as most transactions are done by card nowadays. That is except the large carpark in Bath where only cash could be used to pay for parking. The telephone numbers on the board above the machine, to use to pay automatically didn't work and so we left our car there without payment one evening in the hope we wouldn't be charged. So far so good.

I am looking forward to the annual Christmas Fair and the Christmas wreath making workshop where the mulled wine flows and determined this year to buy all my Christmas presents by the end of October.

Patricia Kennedy 845397 pat@visa-office.com

PS Please, if you haven't already addressed the foliage overhanging our walkways, please cut it down as soon as you are able.
Thanks.

Church News

There's lots of exciting things happening at All Saints in October!
On the 10th it's the Harvest Festival Service taken by Jane Hurd at the later than usual time of 10.30 a.m. to allow more people to come and following the service ploughman style refreshments. Please bring food for the foodbank on either Saturday or Sunday and come to help decorate the church on Saturday morning or whenever the church is open.

On the 24th Stella Wood returns to Maiden Bradley to take the service at 10.00 and there will be a chance for friends old and new to chat to her after the service when there will be refreshments.

At the very end of the month, on the 31st, Canon Harold Stephens, who is an excellent speaker, will be taking our Benefice Service when we welcome parishioners from West Knoyle and Mere to the church and there will be yet more refreshments.



Not all veterinary practices are the same
 We are available to care for your pets, horses and animals 24/7
 If your pet is overnight with us, they are never left alone
 Garston vets - a truly independent approach
 to animal care for over 100 years.



Frome 01373 452225	Melksham 01225 617779	Trowbridge 01225 754021	Warminster 01985 213350	Westbury 01373 301448
-----------------------	--------------------------	----------------------------	----------------------------	--------------------------



www.garstonvets.co.uk



Computing@home

Computer support and training run specifically for home users.

Available remotely or in person Ideal for anyone without IT experts easily on hand. IT terrified to advanced - silver surfers a specialty.

**Contact Nigel on:
www.computing-at-home.co.uk
 01985 844637**

News from the Hall

Maiden Bradley Memorial Hall – 01985 845303 (answerphone)

Sunday 3rd October

Saturday 9th October 7.30pm

Sunday 17th October

Saturday 23rd October

Sunday Catch-up Coffee Morning 9.30-11.00
 LIVE MUSIC with Jon Kenzie and support from The Tin Foil Hats – Wine and Beer (cash only) bar available
TICKETS SOLD OUT!!
 Climate Collective Coffee Morning 10.30-12.00
 Peter Rabbit 2 Doors Open 5.45pm Film starts 6.30pm (Fish and Chip Van 5pm-6.30pm)

The first of the season, a community film night, come and join us for a social evening of film and drinks, FREE ENTRY, and a raffle to cover costs

POST OFFICE SERVICE – Every Tuesday 1-3pm

FRIDAY COFFEE MORNINGS – 10-12

Come along for a coffee and catch up with new and old friends



A belated celebration was held in the Hall for Mel Thomas' birthday. It featured the great music of local covers band, The Full Motley - not their first appearance at the hall and hopefully not their last!

Christmas Fair

We are pleased to announce that preparations are under way for the annual Xmas Fair to be held on Friday November 26th in our Village Hall.

If anyone wishes to reserve a table we would be grateful if you could let us know as soon as possible as space is limited and some tables have already been booked.

Please all make a note of the date in your diaries as we look forward to raising as much money as we can. All profits will be split equally between our wonderful Church and Village Hall.

Please contact Sue Priestner 01985 844244 or Keith Appleton 01985 844722



The Maiden Bradley Climate Collective

Activating Maiden Bradley's Environmental Response

Recently a few people from the village gathered to talk about expanding our activities and ambitions for our response to the Climate Crisis.

Here is what Val Symmonds said:

"During lockdown our valiant village volunteers were kept busy collecting shopping, meds and other essentials.

I no longer have personal transport, so since 'freedom day' I've continued to do all my food shopping online, and been keeping the wonderful Mere & District Link Scheme busy for all my essential appointments. Friends are also always willing to help out if they are available, but who likes asking? and anyway it seems a waste of resources for all of us to make separate trips to collect meds and other essentials.

My idea is to encourage people in the village coordinate our resources for trips like this? I know when you do have a car it seems only natural to hop into it and drive down to pop into the co-op in Mere or off to Frome for the brand of butter not supplied at the milk station. But when you don't have a car, such a thing is a luxury! And waste of resources too."

There is so much scope for pooling our transport resources but as ever with such things it needs a critical mass for engagement. If there are enough people putting their trips out there for sharing then the chances are much higher that there will be something useful when others need it. There are lots of websites that offer a facility for this eg. Bla Bla Car but they tend to be aimed at city to city trips. If several of us signed up for it we might get a good system in place. In the meantime we could use 'Facebook' or 'Nextdoor'. The local 'Facebook' page is public and it would feel more secure if we created a private one? It would be interesting to hear people's thoughts about all this. Of course it would be better still if we had a more useful bus service but that is doubtless a fantasy!

On a very beautiful Saturday last month at the beginning of The Great Big Green Week we had a heartening response to the call for people to join a walk to Horningsham. Jannine and Tom led us a very lovely way that I had not fully explored. While we were in Penny's Wood we agreed to be silent which enhanced our experience of the nature around us, and helped the senses to sharpen to other stimuli.



There was a general thought that this would be a worthwhile thing to do regularly. We have many neolithic sites within walking distance of the village and we are organising a walk with the very knowledgeable David R Abram who takes incredible arial photos of sites all over Britain. (You can see his work on instagram). We would love to hear from anyone in the village who would like to lead a walk and tell us a bit of history; recent or ancient! Look out for more on all that and join us.



Have you noticed our latest facility in the village? The Dog Station is accompanied often by glorious dahlias and other garden flowers on offer. The very generous Sharon (who told us about her pledges last month) and Adrian have set these things up by their drive at Foxleaze on High Street. The whole dog poo question remains a worry from the environmental point of view. Apparently there is a scheme being developed somewhere in the UK to create a dog poo powered lamp-post! I am looking forward to that coming on stream! Meanwhile it is important that you use corn-starch bags which are properly compostable and of course remember to dispose responsibly!

Kate

Lending with Heart and Mind

Wiltshire Council fund a not-for-profit loan scheme for homeowners.*

If you have lived in your home for over 5 years and:

- **Are over 60; or**
- **Are in receipt of State Benefits; or**
- **Have children under 16 living with you.**

You may be eligible for a home improvement loan to keep your home warm, safe, and suitable for your needs.

Lendology CIC work in partnership with Wiltshire Council to deliver the council subsidised loan scheme. Our knowledgeable team of advisers will guide you through the process of applying.

To book a no-obligation assessment, or for more information, visit www.lendology.org.uk or call **01823 461099**.

Heatherton Park Studios, Bradford on Tone, Taunton, TA4 1EU

*subject to eligibility



www.greenlifeplumbing.co.uk | 01985 845 304

Oil & Gas Boiler Installation, Servicing and Maintenance

General Plumbing Works

Full Central Heating Systems

Underfloor Heating

Air Source Heat Pump Installation, Servicing and Maintenance

New Build Contracts and Extensions

Industry and Manufacturer Accredited



LUNCHEON CLUB

Luncheon Club is back in the swing of things. We had 22/23 sit down over the first two weeks with others due back with us soon. The cooks prepare and cook meals for 40 (no mean feat after so long just cooking for your family during lockdown). This includes those sitting down for lunch, the cooks and helpers and those who can't get to the club who have their lunch delivered to them by either Dolly or Fran. This is a service very much appreciated by the recipients.

We will be holding our AGM after lunch on 7th October, when we discuss are finances and if we need to raise the cost of the meals. The cost is kept low by are thrifty cooks and all members are very grateful to them for the delicious meals they produce.



photo from village archive - Leathers' coaches 1939

WELCOME CLUB

Thirty-two climbed aboard for our trip to Sidmouth. Unfortunately our planned stop for coffee at the donkey sanctuary could not go ahead as the coach parking was not opening until October. However our driver Lionel had arranged an alternative stop at West Bay. This turned out to be very popular with several different coffee shops and sunny weather to sit and enjoy a natter.

On to Sidmouth, taking the scenic route which allows you to view

some wonderful countryside along the way. Once at Sidmouth everyone went off in various directions to have their lunch. This is always a popular destination as the terrain is very flat and besides the pretty gardens there is plenty of seating along the sea front to sit and people watch.

Back on the coach we came home by the direct route stopping at Cartgate for a comfort stop and to draw the raffle for the five lucky winners.

A good time was had by all.



If anybody would like a daily or Sunday newspaper I can organise it for you. Newspapers are delivered to me opposite the Pub so - just give me a call.

*Diana 844428
thankyou.*

The Poppy Appeal 2021

The Royal British Legion was formed 100 years ago, bringing together four national organisations of ex-Servicemen that had established themselves after the First World War.

The main purpose of the Legion was straightforward: to care for those who had suffered as a result of service in the Armed Forces during the war, whether through their own service or through that of a husband, father or son. Today, the Legion continues to help people in the Armed Forces community transition to civilian life and build successful careers among many its other functions.

Your support is as vital as ever as the impact of Covid-19 continues to leave some people we support in urgent need of our help, so can you please give generously and wear your poppy with pride in this centenary year.

This year we have decided not to carry out the usual house to house collections but will have poppies in the village hall, pub and church available to buy.

Please remember that if you are a taxpayer, use a gift aid envelope.

Sarah Neish



Santiago de Compostela The Camino The Way - My Way

Despite Covid hitting the world, as soon as Spain opened its borders to the UK, I decided that I would complete my walk before I turned 70 in September, which had always been my goal. The remainder of my task was to take me from Leon to Santiago, a distance of 378 kilometres (235 miles). The last time I was walking the route was in May 2019 and due to the fact that I had done very little distance walking since then, I joined the local Ramblers group and managed a few 12 mile walks before I set off.

Packing the rucksack is an art in itself. Finding the lightest weighing clothes appropriate for the anticipated weather conditions, the possibility of cold nights, the necessity for several pairs of good socks, adaptors and charging wires,

snacks and of course, water. This all weighs heavily on the walker and so this time I decided to send my rucksack by transport and only carry a daypack.

Arriving at the same convent in Leon that I had left the last time, I met Rachel who, like myself, didn't know which route to take the following morning, the country path or the one by the main road. On previous experience we opted for the country route and contrary to my guide book, we found it to be very well signposted.

I spent four very sociable walking days with Rachel who could speak English, French and Spanish fluently. Rachel had lived and worked in the UK for several years before returning to her home town of Paris. The morning I walked away alone from our Alberge, it was 5.30am, dark and deserted. White street lights were dotted through the village showing the way and my new headlamp took over when I was striding out beyond the village boundary into the unknown.

A typical day's timetable for me was alarm at 5am, out walking by 5.30am, walk to the nearest café enroute and have breakfast, orange juice, croissant, café con leche. Refreshed, I would walk to the next café if there was one and then on to the Alberge. The main meal of the day would follow the daily ablutions of shower and clothes wash. Some days the siesta was inevitable. Charging the MP3 player, mobile phone, kindle and toothbrush were also daily activities because I may not have had a safe charging point at the next Alberge.

Effergies like this are dotted along the route - sculpted in stone or metal





Pilgrim carrying a cross

The average distance I walked each day was 12 miles. Occasionally I would walk less and on the longest walk, I managed 18 miles mostly uphill and climbed the equivalent of Ben Nevis. The terrain on the whole of the section from Leon is easy underfoot except on one ridge in the mountains where the rock formation meets the path. No one told me just how beautiful this mountainous region would be. No rugged rock formations, more like tall rolling hills with u shaped valleys and covered with vegetation, the lower slopes transformed into fields.

The wildlife was scarce. In the dark on a couple of mornings I turned towards a scratching noise to see a little black rat scrambling up a bank and on another day, a small brown mouse scurried across my path and disappeared into a tiny hole covered by a leaf. Entering the villages in the dark mornings along the route, I would be met with the sound of the crickets overwhelmed by several cockerels crowing, the

sound of the milking machines from the barns and the occasional hooting of a nearby owl. Dogs were plentiful. Lying asleep behind the garden gate, barking furiously behind the garden gate or baying anonymously to the full moon. Many were loose in the streets and probably bored by the sight of so many strangers over the years just walking through. The cats were everywhere that was close to habitation and so skinny that at one outside café, I felt obliged to feed a cat from my plate.

Unlike the previous sections of The Way, the Alberges from Leon onwards were of a much higher standard. I imagine that grants were available at these hostels and cafes to provide quality facilities. The Alberges had changed from Youth Hostel status to bijou hotel. The majority of pilgrims walk the whole length of the French Route but in recent years with the bestowing of a Compostela on those who only walk from Sarria to Santiago (111k – 69 miles) many will take a week's holiday to do this. Thus the demand for quality venues for this activity is increasing annually – a real tourist attraction fuelled by the film The Way.

The absence of English speaking people along the route was disappointing. I met two English people and one Irish person. On a particular day and feeling very tired after walking for a few hours without finding respite, I turned into a converted barn café, placed my order and sought a quiet corner in the shade when a lady rushed towards me speaking English and so eager to engage in conversation. She had not met another English person for a very long time, lived 90 days in Spain and because of Brexit, then had to live 90 days outside of Spain. In fifteen minutes we covered many topics and with my coffee drunk, I hastened to the peace of my walk.

The other English person I met was riding a bicycle on entering the town of Portomarin, and he also had failed to meet anyone else from England. To get to the town a bridge had to be crossed. The bridge was several hundred yards long across a very wide and very deep river valley. The path was narrow, the bridge wall far too low and as I do not have a head for heights, a difficult crossing. The town of Portomarin was unspoilt by poor development as seen in other places. The Alberge overlooked the river valley and the nearby restaurant provided a hearty meal at a very reasonable 13 euro price. The food in towns was of a good

basic standard and prices around 12 euros for a three course meal with bread and a drink. A drink could be a bottle of wine. I ate alone for the majority of the time except when meeting up with Michelle or Alice, fellow pilgrims.



Church of Knights' Templar

Leaving Portomarin early I noticed what I thought was dust, in the light of my headtorch. I walked on and then thought that it might be rain but it didn't feel wet. Should I go back for my waterproof in my backpack or carry on? Mistake number one of the day. I walked on through sheltered tree lined paths and put on my fleece despite the warmth. The misty rain continued and I decided to ask at the next café for a bin liner which I would then modify into a cape. The Cornish-like weather continued and I was relieved to have better defences against this sudden change in conditions. Klaus from Denmark had told me about a church along the route into Palas de Rei, in which all the Knights Templars were knighted, it was down a track a couple of kilometres there and a couple back onto the route. Mistake number two.

I decided to take this chance of seeing the tombstones of these historical figures and turned off the track. There were not many pilgrims on The Way and none on this empty road in the countryside, however I walked on and arrived at the church at Vila de Donas. Took my photos, signed the book, stamped my Credential. The custodian showed me a map of the route back onto The Way. Mistake number three. I walked back to the main road and started my way along this busy fast road with no footpath, just the side of the road to walk on. After 3 miles of this hazardous walk, I dipped into a café, re-joined my route and considered myself fortunate on several counts.

The highest point on the route through the mountains was marked by a very tall cross. Around the base of the cross was a mound of stones. On my approach, I picked up a small stone to place on the mound with no particular significance other than what I had seen on the film. A lady offered to take my photo beside the cross so I mounted the pile and was unprepared for the reaction I experienced. I looked down to the pile and on many stones were just the names of people or with hearts drawn on them. An overwhelming feeling of sadness came when I thought of the hope for loved ones that the pilgrims had attached to their stone. A small group of Americans from Tennessee were saying prayers at the cross and one very dark morning, I attached myself to their group, just to have some company until the breakfast café loomed and light returned. They comprised of an Aunt, nephew, niece and friend walking part of the way. They were the only Americans

Inside the Church of Knights' Templar



I encountered. We met again at the lunch stop in the village where I would be staying, had lunch and then I wandered off to find my backpack and room for the night. According to my guide book the Municipal Alberge that I had sent my backpack to was the first building in the village but the house was empty. I checked all the Alberges in the area and eventually found where it had been left. The Municipal Alberge, like so many that I found on the route, was permanently closed. Covid and a lack of personnel to manage the business was said to be the reasons.

Sixteen days of continuous walking and I arrived at the outskirts of Santiago de Compostela. The day's walking along wide footpaths and lanes and through the eucalyptus plantations assisted me in calming down from the trickery of the owners of the Alberge I had just stayed in. Booking through booking.com I reserved a room in advance for a whopping 40 euros. On arrival they wanted to charge me 45 euros which I refused to pay. Eventually they agreed to 40 euros as advertised then pretended that payment hadn't gone through and had to be done again. There was no receipt as the device had run out of ink. No proof that I had paid. A second attempt was made and I was given the key to my room. Clearly they had charged me twice and on checking my account this was confirmed. Thank goodness for Barclays, just a phone call and my money was restored.

From the outskirts of Santiago to the cathedral seemed to take forever and finding my Alberge amongst the narrow lanes surrounding the historic place took some time. There were many street cafes and hearing the sound of piano playing, I sat to listen and take refreshments. The place was streaming with people, delivery vans and pilgrims. Time was passing and I had to find my shelter before nightfall. I wandered on through the streets and eventually found a waiter with good English who gave perfect directions – I was only 50 yards away and the relief was great. In my wanderings I went inside the cathedral to see the tomb where the bones of St James the apostle are said to be resting. A small coffin in gold stood surrounded by more gold, some distance from the narrow viewing place accessed via a few steps from the level of the cathedral floor. Earlier in my walk I was disappointed to find out that the cathedral no longer displays the great incense burner every day but only on holy days of their liturgical calendar. The incense burner is very large and takes eight people to raise and swing it the length of the cathedral, now that would have been a sight to see!

In order to obtain the Compostela from the cathedral clergy, pilgrims have to go to their offices nearby and fill in the online form before joining the queue. Each person is given a numbered ticket and the wait was for two hours before I was due at one of the ten desks. I showed my credentials with all my stamps on from the Alberges, cafes and churches I had visited along the route and was

given my certificate confirming I had walked the whole of the French route and another certificate confirming the total distance of the walk.

Mission accomplished. Getting home was a further challenge, but that is another story.

Patricia Kennedy

Steps leading up to the Cathedral



Message from Councillor Bill Parks

Residents may have heard about Ash Dieback and/or seen tree felling across the County, over the last few months and I thought it would be helpful to explain a little more about this disease and actions which need to be taken. It is estimated that there are over 100,000 Ash trees growing beside Wiltshire's roads, and an equal or even greater number on the 6,000km of public rights of way in the county, as well as around 140,000 Ash trees on council owned land. Nationwide it is anticipated that 90% of woodland trees and 50% of trees outside woodlands will be affected.

Ash Dieback is already widespread in Wiltshire and poses serious safety, practical, environmental, and financial risks. Once infected trees decline quickly, often dying within two growing seasons. The trees rapidly lose timber strength and integrity and are prone to structural failure, leading to branches and trees falling, increasing the risk of death or injury to persons and damage to property. The Council is working to monitor and remove unsafe Ash trees, prioritising trees on the highway, rights of way and in public spaces. The cost of the programme is likely to be significant, with the cost to the Council of removing trees over the next ten years likely to be at least £10 million and could be significantly more.

Alongside this, it is strongly advised that all landowners should take steps to identify, monitor and remove infected Ash trees on their land. I know that many residents and communities will be keen to explore opportunities to replace any trees which are removed, and Wiltshire Council has produced a Community Environmental Toolkit which contains useful information, including funding opportunities for community groups.

Finally, a reminder that the Wiltshire Council Climate Strategy is now open for public consultation until 17 October. It covers seven themes: transport; built environment; waste; green economy; energy generation, storage, and distribution; natural environment, food, and farming; and carbon neutral council. At the same time, we are also consulting on Our Natural Environment Plan which looks at the future for Wiltshire's natural environmental assets and how the council can help protect and enhance them for the benefit of people and biodiversity.

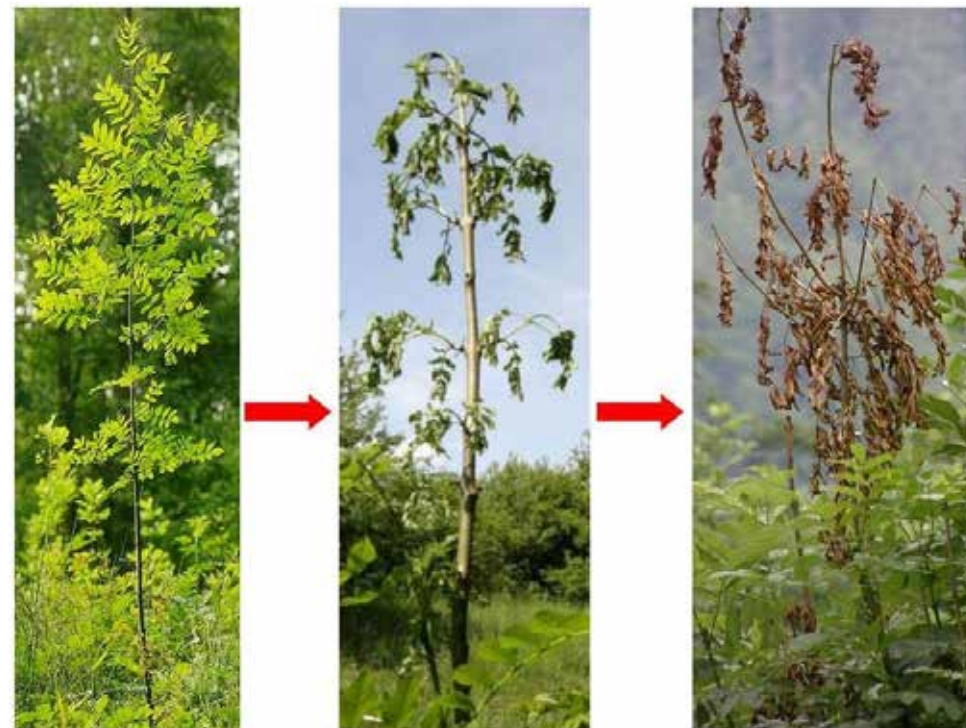
More information is at www.wiltshire.gov.uk/climate.

Bill Parks
Wiltshire Councillor Warminster North and Rural

Wiltshire Council

Tel: 07712 490075

Email: bill.parks@wiltshire.gov.uk



photos courtesy Teagasc

COMMUNITY SPEED WATCH NEWS

Police Community Volunteers working on behalf of
the Wiltshire Police and Maiden Bradley



Welcome to Community Speed Watch News, September Issue, compiled and produced by the Maiden Bradley Community Speed Watch Volunteers to keep the village aware of our activities. Also an update on the Frome Road improvement and 20mph High street projects

The three new CSW members are active with the rest of the teams.

Activity, good as usual this month, although only 6 sessions with 1021 vehicles counted and 71 vehicles logged for speeding. Again one in excess of 50mph

The level of aggression and abuse towards CSW members is on the increase right across Wiltshire.

The problem area, Frome Road (B3092) and Church Street are suffering the same problems as always.

We continue to share the Speed Device with the Deverills CSW team. They suffer the same problems as we do.

SID. The Speed Indicator Device. A second SID has been proposed and quotations are being sought.

Update on the Frome Road improvement and 20mph High street projects

Frome Road, White Gates, Signage and Roundels on the Road.

Monday 13th September a meeting was held on site with the new traffic engineers for our area, to discuss and re confirm the agreed project. You will see shortly that the hedge cutting has taken place in the required area and that the white gates and road markings and signage should be completed by the end of November early December this year.

High Street 20mph

The 20mph speed limit is fully agreed for High Street. However with Back Lane and the section of Kingston Lane (Back Lane to the T junction) being added, requires a Metro count (Traffic flow analysis) to be carried out to establish that these two sections of roadway meet the required criteria for a 20mph speed limit. If they do not meet the criteria then the 20mph will be applied only to the agreed High street section.

White Gates

Next year it is planned to agree and install White gates at the start of the present 30mph section of High Street coming into the village. The year after next it is planned to install White gates at the Mere end of the village again at the start of the 30mph restriction.

If you see an incident Call 999 if the driver is still on scene, or 101. Take the Reg. No.

Thank you for all your support

Simon Wager

**Simon Wager. Community Speed Watch Co-ordinator.
Chairman Maiden Bradley Parish Council**

Maiden Bradley Weight Watchers

Since our last article in the Parish News MBWW have continued to engage with relevant parties to try to get the 7.5 tonne weight limit implemented on the B3092 through our village.

This has been through a letter sent to the new regime at Wiltshire County Council to the Leader Councillor Clewer and the Cabinet member for Highways Councillor Mark McClelland, and copying in our local councillor Bill Parks and also our MP Andrew Murrison.

The response was to be expected. That is "sympathetic to our problem, but they are a new set of councillors", "they would need to see updated figures from a new report as the situation has changed since the original decision to implement the weight limit was made" etc.

We are not accepting these excuses as we feel that the reasons for agreeing the weight limit 10 years ago are still pertinent today, and that if W.C.C. need to get another report that will be costly in terms of time for us and also unneeded expenditure for the Council.

We met with our MP and he has now become involved and feels that our proposal to remove the weight limit on the B3089 at Willoughby Hedge is the route to follow as this will allow HGV's to use this route from the A350 to the A303 westbound thereby negating the argument that this is an accident hotspot and is why trucks pass through Maiden Bradley to the A303.

He is prepared to host a meeting with WCC which will include Corsley and Chapmanslade as they have similar problems to ourselves.

So to be prepared the three villages have had a preliminary meeting to identify common ground and an approach from which we can then meet with WCC and this is- that that we don't need a new report; we all want a 7.5 tonne weight limit; the B3089 solution is what we want; complete a strategic review of strategic freight routes on main A roads.; commit to a timeline to implement for this.

We would hope to have the meeting with WCC this Autumn.

Secondly MBWW are concerned about the proposals for the superquarries near Nunney and we have engaged in correspondence with the aggregate companies, the Mendip Quarry Producers and Somerset Council to ask questions about HGV movements as we are concerned that this may increase the number of HGV's through our village.

Bill Parks our local councillor, and our MP Andrew Murrison, have become involved in this and have contacted Somerset and Wiltshire Councils to ask why they have not been included in planning consultations. We identified this as a potential problem and submitted our comments to the consultation several months ago, and we welcome this additional help. We will be contacting the Parish Councils in Nunney and Mells to join forces to ensure we are making the strongest possible complaints.

This is a very brief and simplistic report of what we have been up to. There is a lot of researching, letter writing, phone calls etc. behind the scenes. It is hard work continuing to try to make the County Council stick to it's commitments, and also to be influential in planning matters such as the super-quarries, but we are determined never to go away and we will continue to be a thorn in their side!

**Martin Brown
Alex Channer
Ian Ferguson
Alex Haig**

Maiden Bradley village interpretation board: FAQs

Why did the parish council commission the village interpretation board?

The idea for creating the interpretation board or map emerged from the parish plan consultation in which there were a variety of comments about having a village map, linking the village more with significant local tourist sites, celebrating our heritage and natural environment more, and thinking of ways to bring our community together. The interpretation board is just one element in the action plan designed to respond to these suggestions.

The purpose of the interpretation board or map is to illustrate the key features and characteristics of Maiden Bradley and the surrounding landscape. The map is not meant to be to scale – it is an imagined, artistic representation of our community and environment. The map is for the residents of the village, and it is also for visitors. Most villages have an ‘interpretation board’.

How did you choose what features were included in the map?

The map includes historic or distinctive buildings in the village, as well as key features such as the community garden, church, pub, recreation ground and village hall. We also highlight the farming character of the village by identifying the four main working farms.

Given our location in an Area of Outstanding Natural Beauty, the map illustrates our ancient forests and chalk grasslands, as well as common flora and fauna, and historic landmarks.

Key markers such as the national cycle route, rights of way, and signage for local visitor attractions and towns are included to place our village in the wider area that visitors may explore while staying here.

How much did the project cost?

The total project cost was £3,673.80. The design and illustration of the map took 6 months and cost a total of £1,935 of which approximately 13% (£255) was paid as a contribution by the Maiden Bradley Estate. The printing, frame, and installation cost £1,738.80. This is a permanent investment that will enhance the character and identity of the village in the long-term.

Can the map be updated?

Yes, the map is a combination of original illustrations that are integrated into a map using design software. Over time, when changes are required, the map can be adjusted and reprinted.

Who designed the map?

The map was designed by the professional illustrator and artist Francesca Maclean.

Is the map recyclable?

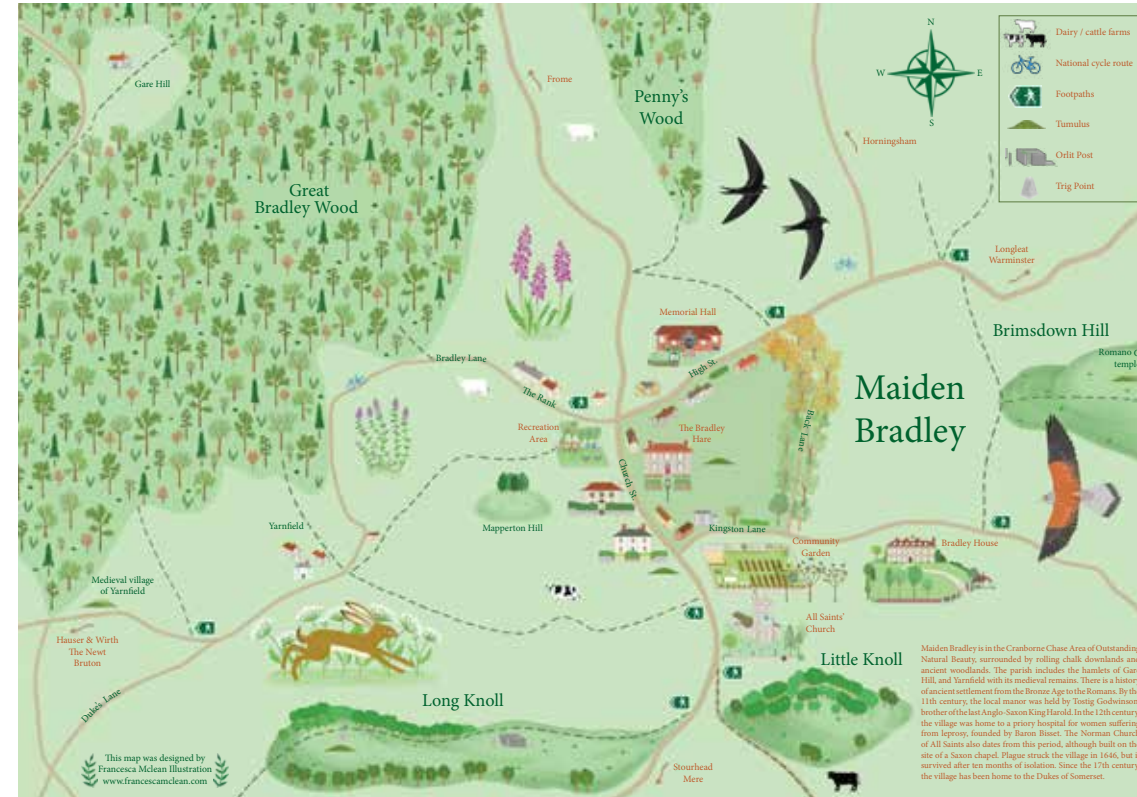
The map is printed on aluminium which can be recycled.

Can I find the map online?

The map is also available on the Maiden Bradley parish council website, including in a dyslexia-friendly font.

Why is the map by the milk-station?

The interpretation board is placed at a key meeting point in the village, by the milk-station. This means it will be seen regularly by residents of the village or local area using the milk-station, including children getting milkshakes, or catching the bus to school. It will also be easily visible to visitors from further afield who stay at the pub. We are grateful to the pub and Estate for permission to place the interpretation board at this site.



Parish Council 14th September 2021

Wiltshire Council Planning - Planning Decisions

APPLICATION NO: PL/2021/06068

Application Type: Listed building consent (Alt/Ext)

Proposal: Reinstate previously demolished chimney, add 2 No new rooflights, replace existing roof light with fully openable, reinstate previously demolished conservatory.

Site Address: The Old Dower House Church Street Maiden Bradley Warminster BA12 7HW

Decision: approve with conditions

APPLICATION NO: PL/2021/06787

Application Type: Householder planning permission

Proposal: Raise one cross gable roof and associated works

Site Address: 34 Church Street, Maiden Bradley, Warminster, BA12 7HW

Decision: Approved with Conditions.

PARISH STEWARD – the 18th of October 2021 is the date of the next Parish Steward visit. Parishioners are reminded that they can directly report any issue they see regarding the highways using the Wiltshire Council app or online www.wiltshire.gov.uk/mywilts-online-reporting.

COMMUNITY FIREWORKS EVENT - agreed the recommendation prepared by Councillor Alexandra Channer and Councillor Martin Gopsill Brown to work towards providing Fireworks at the Jubilee celebrations next year in June 2021, in coordination with other groups in the village.

ACTION PLAN /PARISH PLAN – The Parish Action Plan has been updated and can be viewed on the Parish Council website www.maidenbradley.org.uk

WALKS LEAFLET -Council noted the initial draft, it was agreed that Councillor Esther Swan assist with the layout of the document. Councillor Susanna Brigden to assist with the artwork. Options for an Online version to download, a QR code and a laminate poster or mural on the bus stop, would be developed along with seeking the costs for a booklet. Councillors would develop the leaflet draft and bring it back to Council before moving on the format it will be distributed or displayed as.

MILLENNIUM NOTICEBOARD- the contract has been awarded to refurbish the Millennium noticeboard. The oak frame doors and brass work Legislation requires the Parish Council to provide a conspicuous place in the locality where the Notice of the time and place of meetings must be affixed, Local Government Act 1972 Schedule 12 paras 10(2)(a). Governance and Accountability Notice of the right to inspect the Accounts and the Notice of conclusion of audit sections 20(2) and 25 of the Local Audit and Accountability Regulations notices must also be placed in a conspicuous place in the locality

COMMUNITY EMERGENCY PLAN UPDATE - It was agreed that the Chairman contact those on the present plan and confirm if they wished to remain or be removed. The Clerk would then send in the updated Plan to the Wiltshire Weather Team

EXTERNAL AUDIT - Council noted the External Auditors Report below and approved the Notice of Conclusion of Audit Dates to be published. (The notice must be published before the 30th of September 2021 and be published on the website) Council approved the cost of £1.00 for parishioners requesting hard copies of the AGAR.

On the basis of our review of Sections 1 and 2 of the Annual Governance and Accountability Return (AGAR), in our opinion the information in Sections 1 and 2 of the AGAR is in accordance with Proper Practices and no other matters have come to our attention giving cause for concern that relevant legislation and regulatory requirements have not been met.

Other matters not affecting our opinion which we draw to the attention of the authority: In the prior year, the smaller authority was exempt from our review, thus we have not reviewed any evidence to support the prior year comparatives on the AGAR.

We certify that we have completed our review of Sections 1 and 2 of the Annual Governance and Accountability Return and discharged our responsibilities under the Local Audit and Accountability Act 2014, for the year ended 31 March 2021.

BUDGET PREPARATIONS - the Parish Council instructed the Clerk to take into consideration the jubilee celebrations, village events such as the fete and a bonfire night. The purchasing of a second Defibrillator and Speed Indicator Device, an extension to the spring bulbs project, (extra areas added) and a possible wildflower meadow on the recreational area.

ITEMS FOR THE NEXT AGENDA: Itinerant Engineers proposal, Grounds Contract for budgeting, Financial Regulations update, Freedom of Information Charges reviewed, Annual Newsletter, Provision of Internal Audit Services for 2021/2022 (Internal Audit Quotations), Internal Audit Check by a Councillor to be approved and a date arranged, Clerk's Appraisal and review Clerks hours and Wages for inclusion in the draft 2022/2023 budget.

DATE OF THE NEXT FULL COUNCIL MEETING. The Council agreed that the 12th of October 2021 would be the date of the next Parish Council meeting. The agenda will be published on the 6th of October 2021. As always, the Parish Council meeting will be open at the start with an opportunity for members of the public to ask questions or make comments on any matter. The website www.maidenbradley.org can be accessed to read a copy of the Agenda and Minutes electronically or copies are displayed on the Millennium Notice Board at the Bus Stop.

***Mrs Sarah Jeffries the Parish Clerk can be contacted
by email on maidenbradley@virginmedia.com
by phone on 01985 213436
or post to Parish Clerk, 9 Beech Grove, Warminster, BA12 0AB***

HAVE A REAL CONVERSATION ABOUT YOUR HOME INSURANCE



Speak to your local agency today about your insurance needs

Warminster
Perry Farm, Maiden Bradley, Warminster, Wiltshire BA12 7JD
01985 845116



Our Agents are appointed representatives of The National Farmers Union Mutual Insurance Society Limited (No. 111982). Registered in England. Registered Office: Tiddington Road, Stratford upon Avon, Warwickshire, CV37 7BJ. Authorised by the Prudential Regulation Authority and regulated by the Financial Conduct Authority and the Prudential Regulation Authority. A member of the Association of British Insurers. D-506BC18A



Tailored Lettings &
Property Management
Residential Sales

Mere - 01747 356176

Maiden Bradley - 01985 844972

Anne Freeman

Local, Reputable, Honest & Approachable
Free No Obligation Valuations
amuletresidential@gmail.com

Find us on Facebook
www.onthemarket.com



**YOUR ADVERT
HERE FROM £7.50PM**

E G MARTIN LTD



**for all your
Central Heating Oil**

01373 822784
enquiries@egmartin.co.uk

**your local central heating
fuel distributor**

JERRY RAYNER

boiler maintenance

Call 01985 841461
or 07775 755981

For servicing and
breakdown of oil boilers

- Competitive rates
- Friendly, helpful & efficient
- Call now for a quote

INTERIOR PAINTER & DECORATOR

20+ YEARS EXPERIENCE

Kaaren Arenka

Mobile: 07707 156 498
Email: kaaren.arenka@gmail.com



Rural Business Services was established in 1997 to provide professional book-keeping and administration services for small to medium sized rural based businesses. In addition we offer first class Project Management, sound sensible Business Administration & Financial Solutions together with Board Level Financial Management Experience. No matter how small or big your requirement is we can tailor support to suit your business needs either on or off site.

For more information or to discuss your requirements contact
Lucinda Stokes on 01985 844017
www.ruralaffairs.co.uk • email: lucinda@ruralaffairs.co.uk

GREEN MAN



Professional,
Eco-friendly
Carpet, Hard Floor,
Rug & Upholstery
Cleaning

FROME: 01373 470416



www.greenmancleaning.co.uk

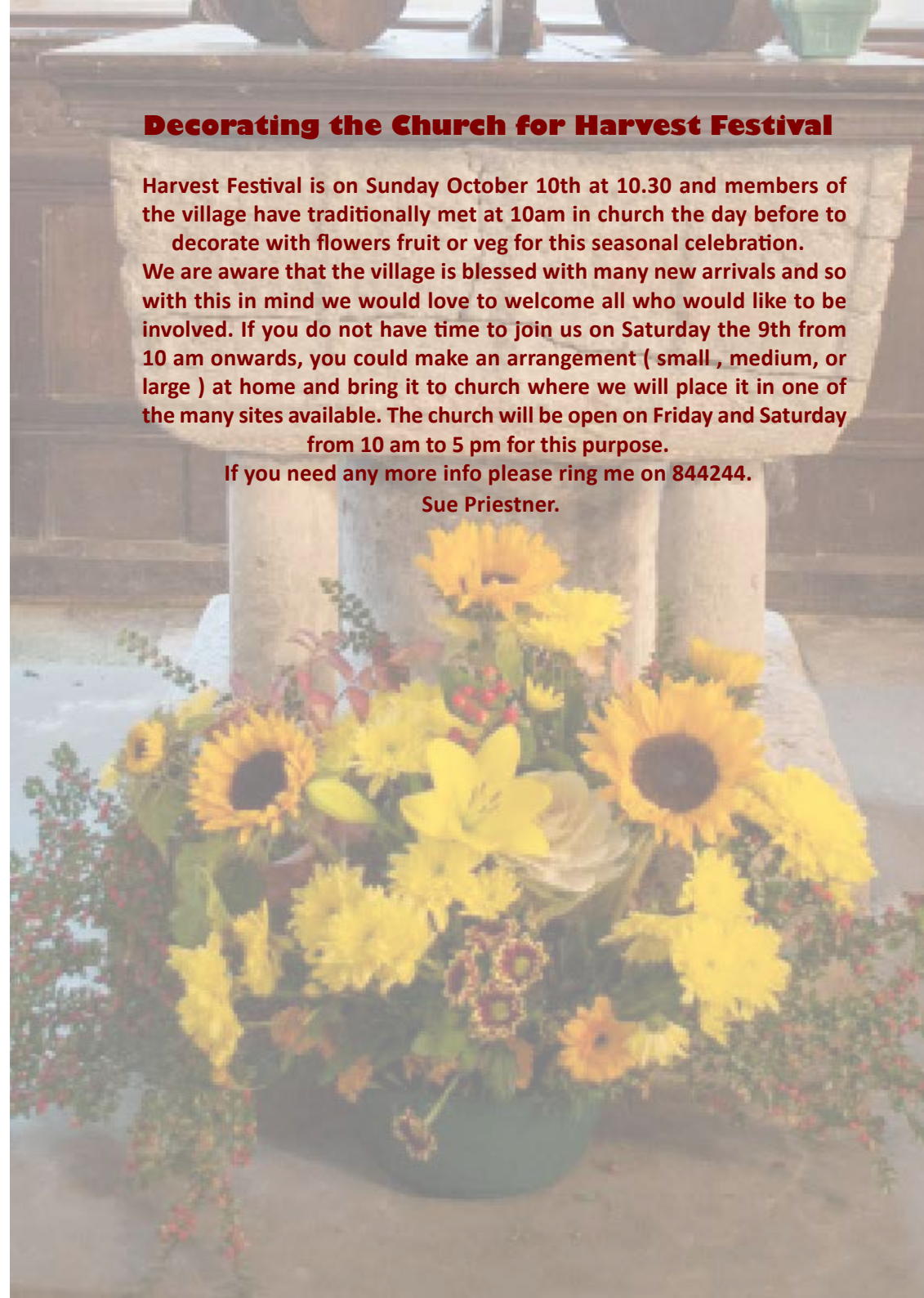
Decorating the Church for Harvest Festival

Harvest Festival is on Sunday October 10th at 10.30 and members of the village have traditionally met at 10am in church the day before to decorate with flowers fruit or veg for this seasonal celebration.

We are aware that the village is blessed with many new arrivals and so with this in mind we would love to welcome all who would like to be involved. If you do not have time to join us on Saturday the 9th from 10 am onwards, you could make an arrangement (small , medium, or large) at home and bring it to church where we will place it in one of the many sites available. The church will be open on Friday and Saturday from 10 am to 5 pm for this purpose.

If you need any more info please ring me on 844244.

Sue Priestner.



Elizabeth Gittoes

Registered
Osteopath



Head to Toe
Osteopathy

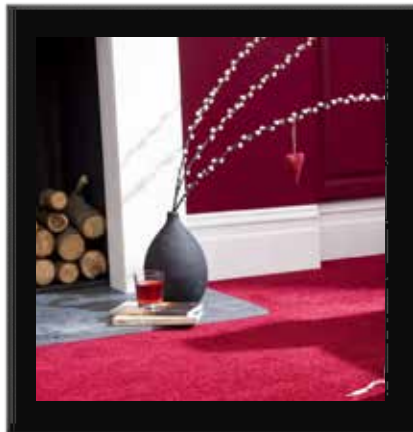
Consultation by prior arrangement. Please call Elizabeth to make an appointment.

Email: lizgittoes@yahoo.co.uk
Telephone: 01747 840496

The Old Police House
Stourton, BA12 6QG.

ALLSOP CARPETS & FLOORING

DOMESTIC ♦ COMMERCIAL ♦ INDUSTRIAL



Christchurch Street West, Frome. BA11 1EB

TEL: 01373 463866
MOBILE: 07887 953014

www.allsopcarpets.co.uk

All Saints' Church Maiden Bradley



10:30 am Sunday 10th October



**Please bring along non-perishable
foods for the Foodbank**



Do stay for refreshments afterwards.